


# Volunteers and Plant Records

*The good, the bad and the unexpected*

Alison Vry

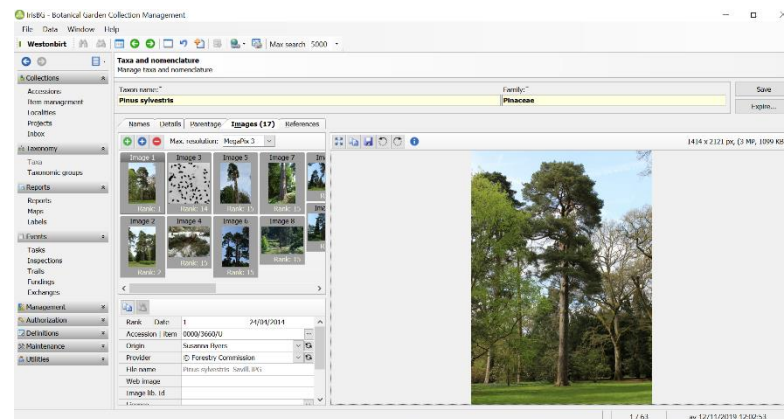
Plant Records Manager - Westonbirt Arboretum



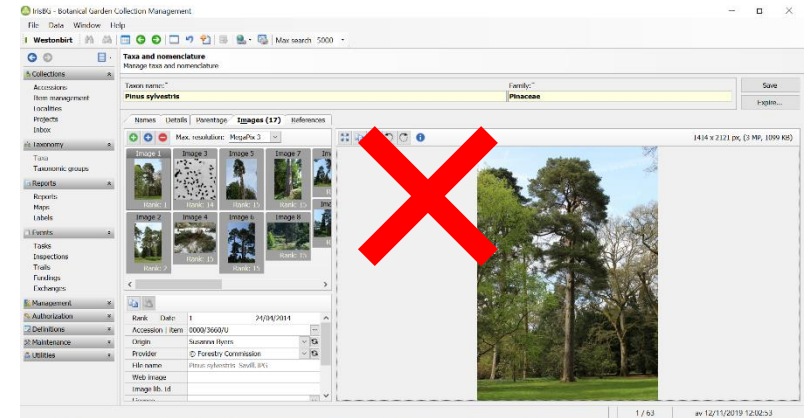
- 
- The background of the slide is a photograph of an arboretum in autumn. The top half shows a close-up of tree branches with vibrant red and orange leaves against a blue sky. The bottom half shows a wider view of a grassy area covered in fallen autumn leaves in shades of red, orange, and yellow, with several trees in the background.
- How do we use volunteers to help manage plant records
  - How do volunteers themselves use plant records
  - What do we gain from using volunteers, and what are the challenges
  - Breakout sessions - how do other gardens do it, what can we learn?



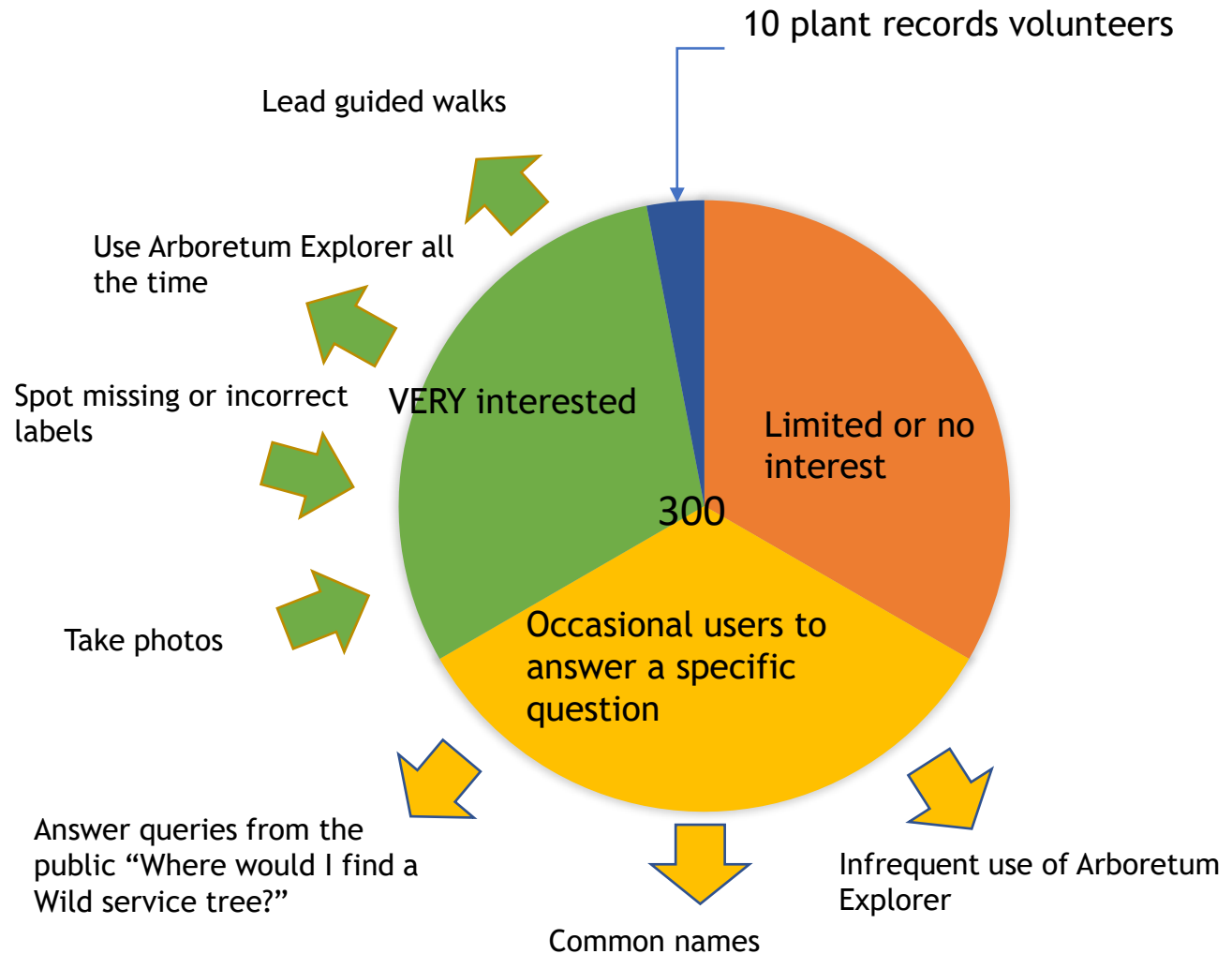
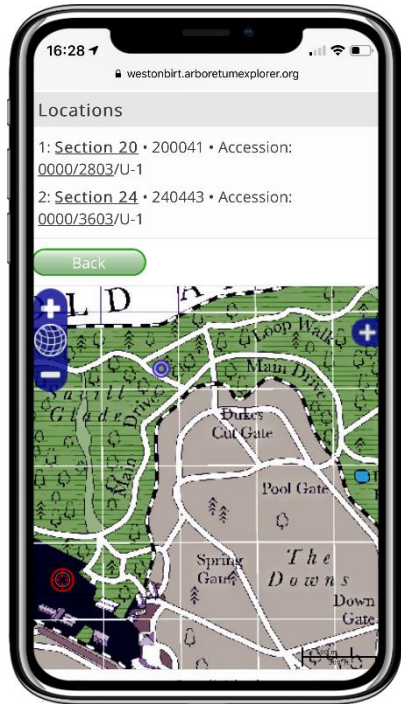
# Westonbirt has 10 plant records volunteers - they label trees and do some limited data entry







On top of this our site has 300 volunteers, and plant records are of interest to many of them



Arboretum Explorer is a crucial tool for volunteers and enables them to access basic plant data directly



# What do we gain from using volunteers, what are the challenges?

Volunteers have time to focus on the little details

Are all 15,000 trees in the Arboretum correctly labelled?

When volunteers are established they can lighten the load significantly

Volunteers can give good insight into how the collection is viewed by the public

Shouldn't those pink bulbs outside the office be labelled?



Can make mistakes (but then so can staff....)

Can take time to manage, some weeks far more than others

Wouldn't it be quicker to do it myself?

## Breakout questions - How do other gardens do it?

Which tasks are quicker to do myself & why?

Which tasks are better to be done by volunteers & how?



What level of access should volunteers have to the data?

How to make best use of volunteer insight, how to make them feel heard