

# It's Not on the Inventory List! Tracking Plants in a Semi-naturalized Meadow

---

Julie Rotramel: Plant Recorder

M<sup>T</sup>.CUBA  
CENTER



# Various Interests in How Plant Information is Maintained

- **Plant Recorder:** Data Integrity, data consistency
- **Director of Collections:** Conservation priorities, wild collected accessions
- **Horticulture Staff:** Ability to find physical plantings
- **Education:** Plant Lists, mapped locations

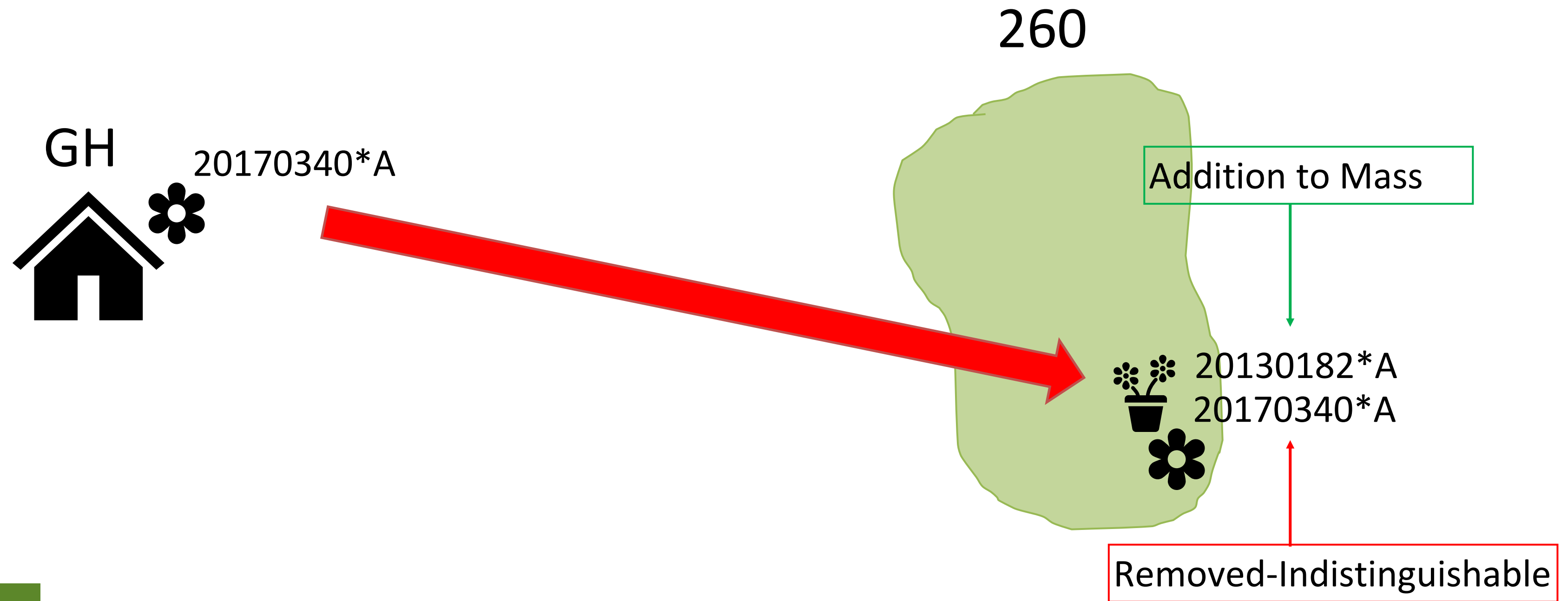
# The Meadow

- The meadow is mowed every year, so labels are maintained only on the periphery
- Plants are mapped generally on the periphery where distinct plant masses can be distinguished and labeled.
- Central portion of meadow is naturalized and is consistently supplemented with new plant material

M<sup>T</sup>.CUBA  
CENTER



# Indistinguishable Plantings



Item Status Type: Not Existing

Item Status: Removed- Indistinguishable

Item no.	Type	Location	Loc. ref.	Status	Date	No. sp.	...
A	Planting	260		Removed- In...	9/13/2018	mass	
A	Planting	GH		Inventoried	1/18/2018	70	
A	Planting	GH		Planted	7/13/2017	mass	
A	Planting	UNKNOWN		Inventoried	1/13/2017		
B	Propagation	COMPLETE		Complete- To Ga...	9/13/2018		

#### Item properties

Item no.	Current	20170340*A	<input checked="" type="checkbox"/>
Type		Planting	
References			
Cons. no.	Cons. no.-2		
Storage no.	External ref.		
Item ref.			
Location			
Location code		260	
Location name		Meadow	
Location ref.	subref.		
Coord. lat.  x	long.  y		
Coord. precision	Altitude		
Status			
Status		Removed- Indistinguishable	
Condition	No. specimens		mass
Date	Person	9/13/2018	Tinalli, Emily
Label type-1	no.	status	
Label type-2	no.	status	
Measurements (foot - decimal)			
Material			
Restriction			
Comments		13 remaining plants removed from GH and added to existing mass of Cirsium pumilum (20130182*A...	
Reg. init.	date	jer	10/22/2020

**“13 plants removed from greenhouse and added to existing mass of Cirsium pumilum (20130182\*A) in bed 260, indistinguishable”**

Item Status Type: Existing

Item Status: Addition to Mass

Item no. ° /	Type °	Location °	Loc. ref. ~	Status °	Date ~	No. sp.	...
A	Planting	260•		Addition to Mass	10/15/2019	mass	
A	Planting	260•		Addition to Mass	9/13/2018	mass	
A	Planting	260•		Planted	11/12/2014	mass	
A	Planting	GH•		Seed Sown	5/21/2014	900	
A	Planting	GH•		Received	8/1/2013	mass	
B	Propagation	COMPLETE•		Complete- To Gar...	11/12/2014		

### Item properties

Item no.	Current	<b>20130182*A</b>	<input type="checkbox"/>
Type °	Planting		
References			
Cons. no. ~	Cons. no.-2 ~		
Storage no. °	External ref. ~		
Item ref.			
Location			
Location code °	260•		
Location name °	Meadow		
Location ref. ~	subref. ~		
Coord. lat.  x	long.  y		
Coord. precision	Altitude		
Status			
Status °	Addition to Mass		
Condition °	No. specimens		mass
Date ~	Person °	9/13/2018	Tinalli, Emily
Label type-1 °	no.	status °	
Label type-2 °	no.	status °	
Measurements (foot - decimal)			
Material			
Restriction °			
Comments ~	13 plants from 20170340*A removed from GH and added to existi...		

**“13 plants from 20170340\*A removed from greenhouse and added to existing mass”**

# Indistinguishable Plantings

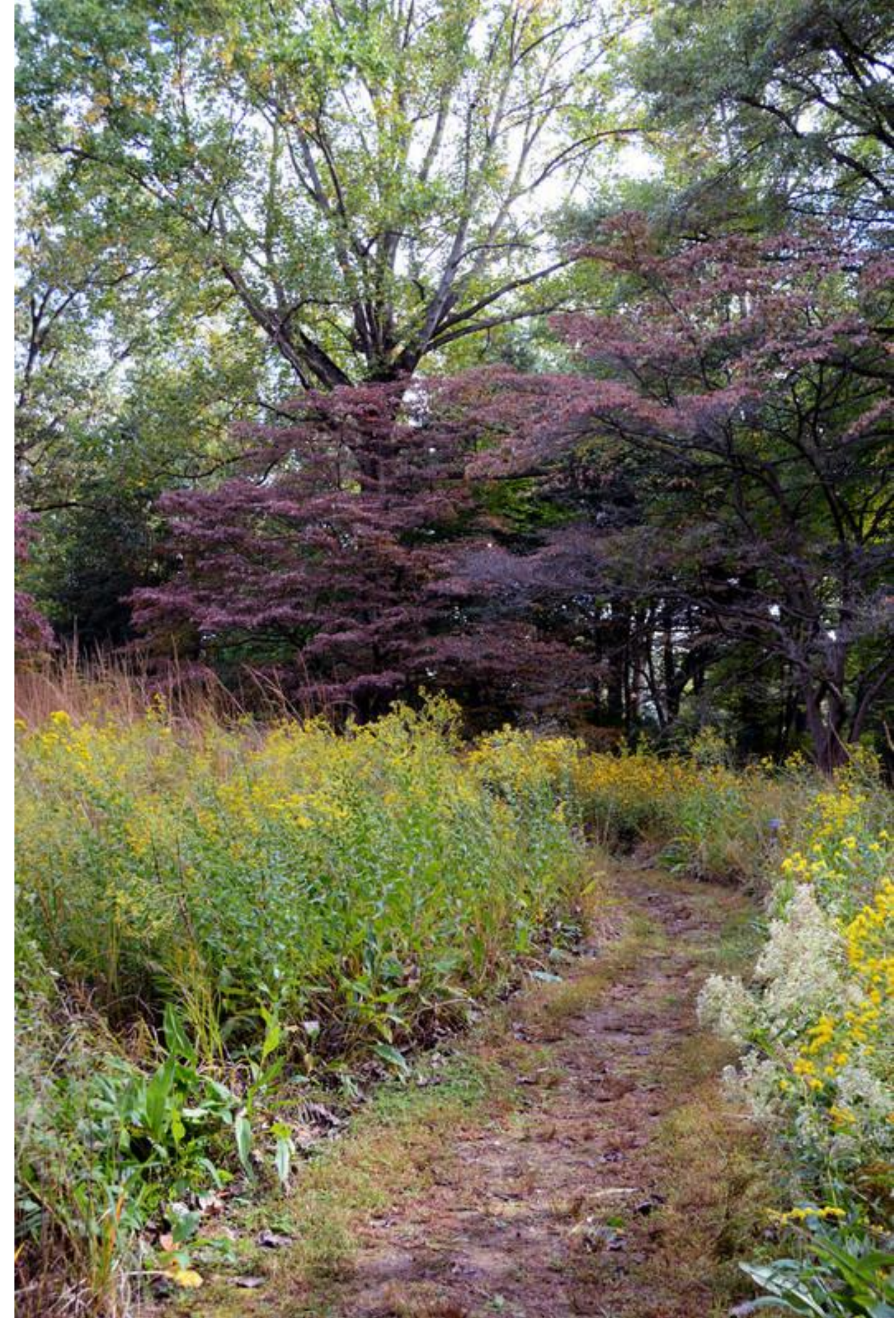
## Advantages:

- Keeps the inventory list clean
- Non-existing report output will show all plantings that were added to the bed if we want a full list of plant material

## Disadvantages:

- Provenance of the existing mass is mixed, and not reflected in the database record

M<sup>T</sup>.CUBA  
CENTER

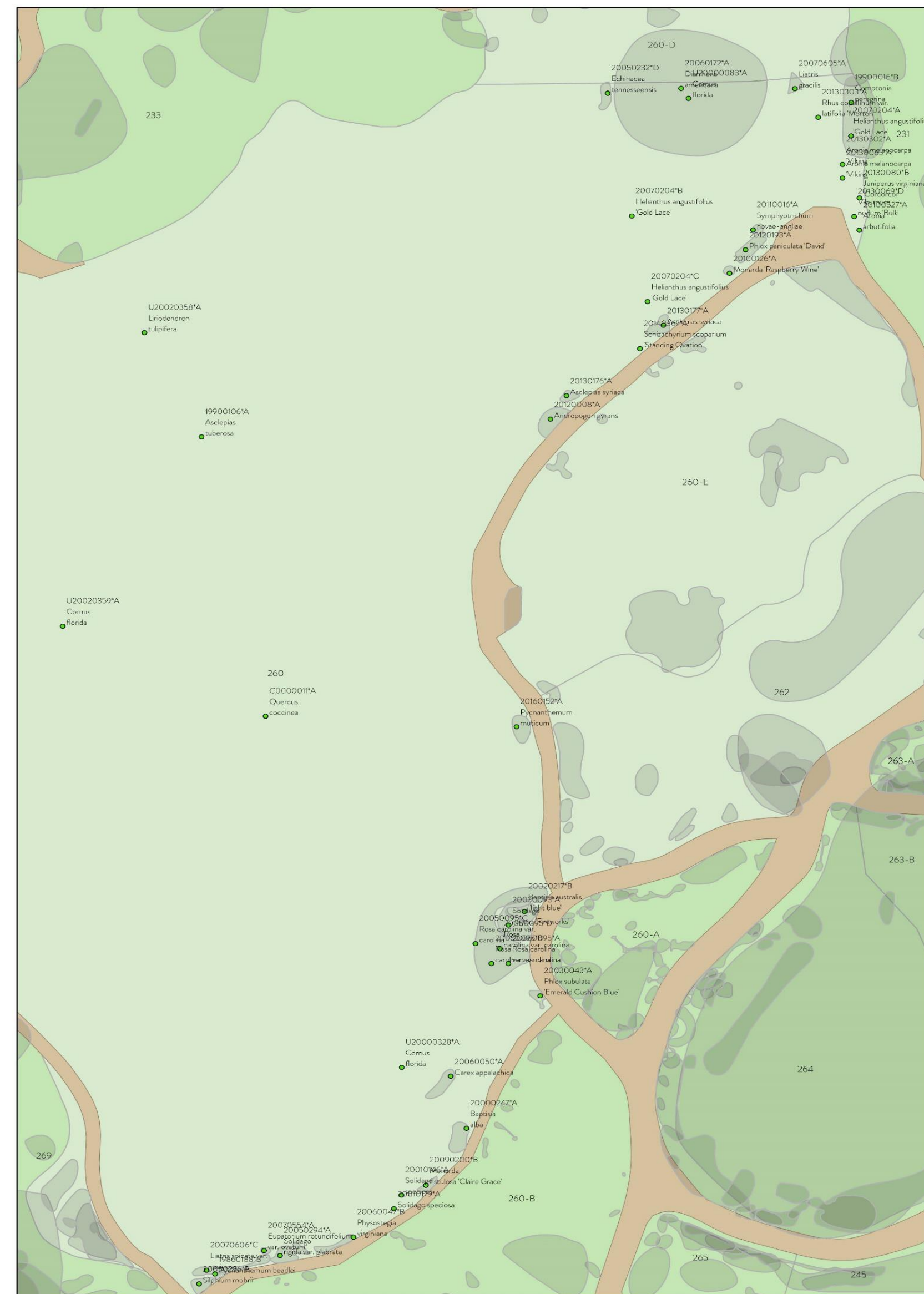




# Conflicts Between Records and Physical Plantings

- When the meadow was first created, many species that were planted and expected to naturalize were deaccessioned immediately
- In IrisBG this translates to a Non-existing item status type
- As a result, some species do not show up on the 'existing' meadow inventory list at all, despite their clear presence in that area.

M<sup>T</sup>.CUBA  
CENTER



# Questions for Discussion

1

How might you manage plant records in the meadow while keeping in mind the needs of each of the interest groups?

Can all of these needs be satisfied with one solution?

2

What do you see as the value or purpose of maintaining provenance information in a naturalized setting?

To what extent do you think it needs to be maintained in this situation?

3

Given its existing functionality, how might you track additions to a naturalized planting accession in IrisBG beyond an entry in the item history?

Could custom attributes help with this problem?

A scenic autumn landscape featuring a dirt path covered in fallen leaves, leading through tall, golden-brown grasses. The path is flanked by trees with vibrant foliage in shades of red, orange, and yellow. The background shows a dense forest of trees with some bare branches, suggesting a misty or overcast day. The overall atmosphere is peaceful and serene.

Thank  
You